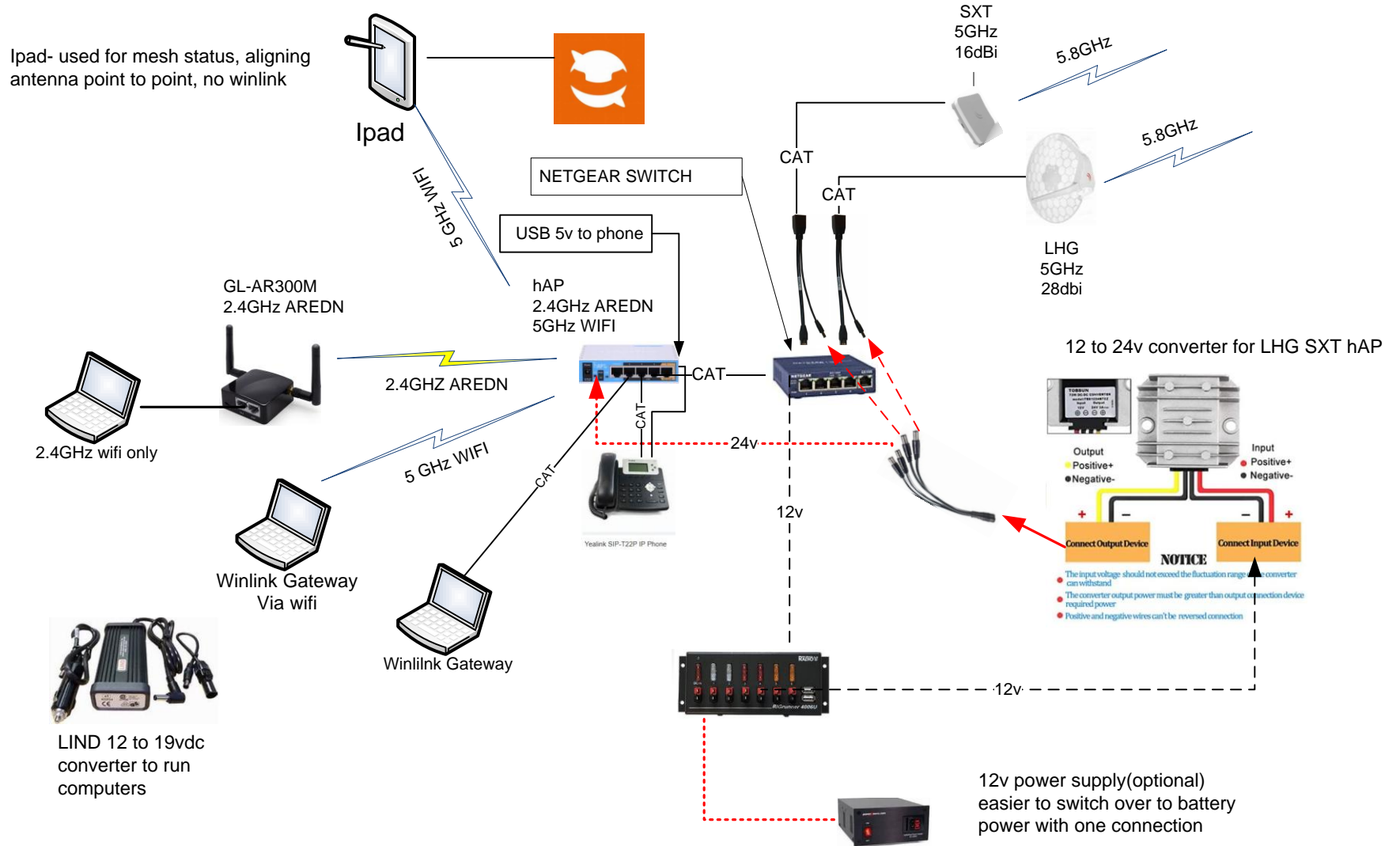
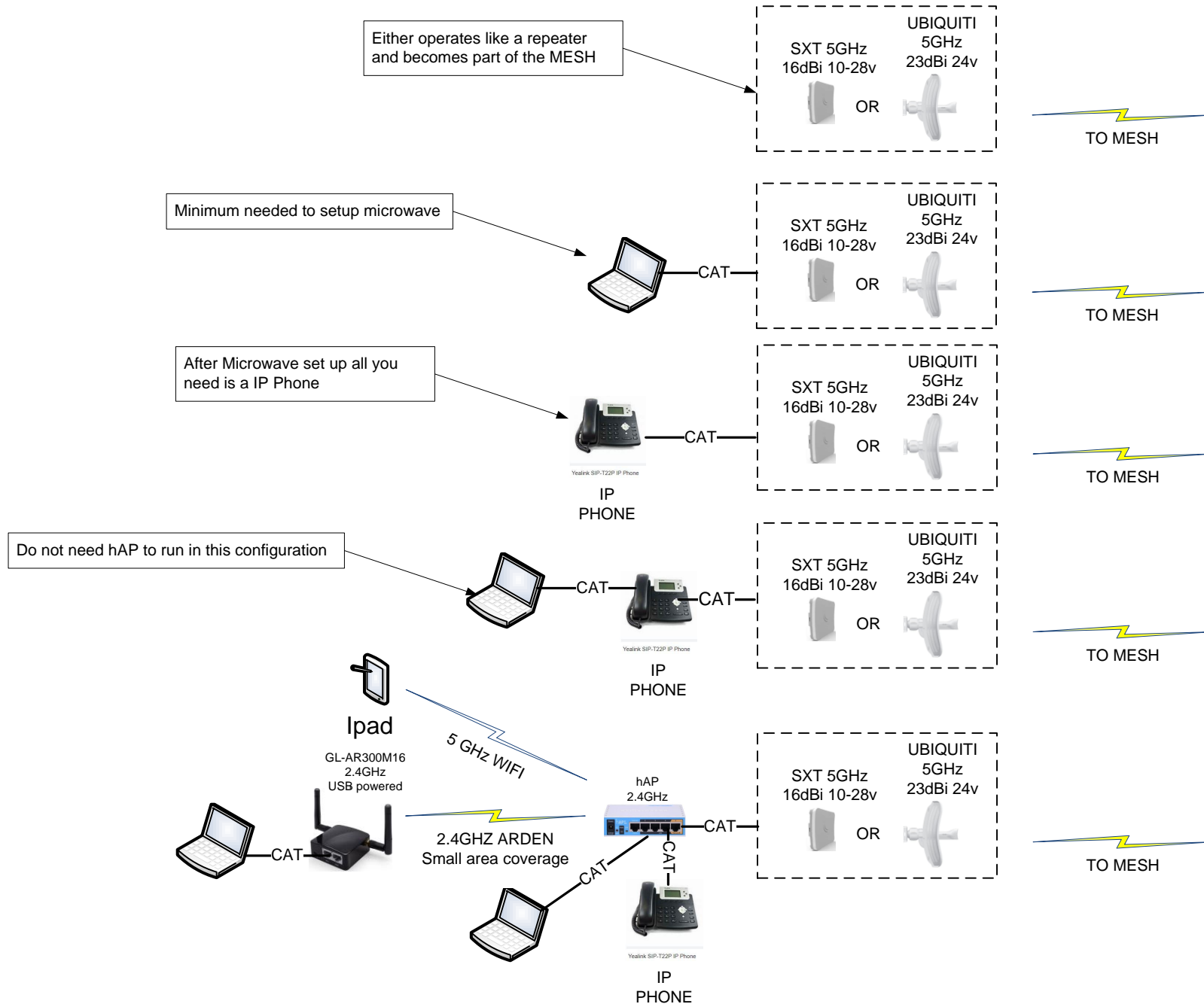


HOME STATION WITH RELAY AREDN MESH 12/4/21

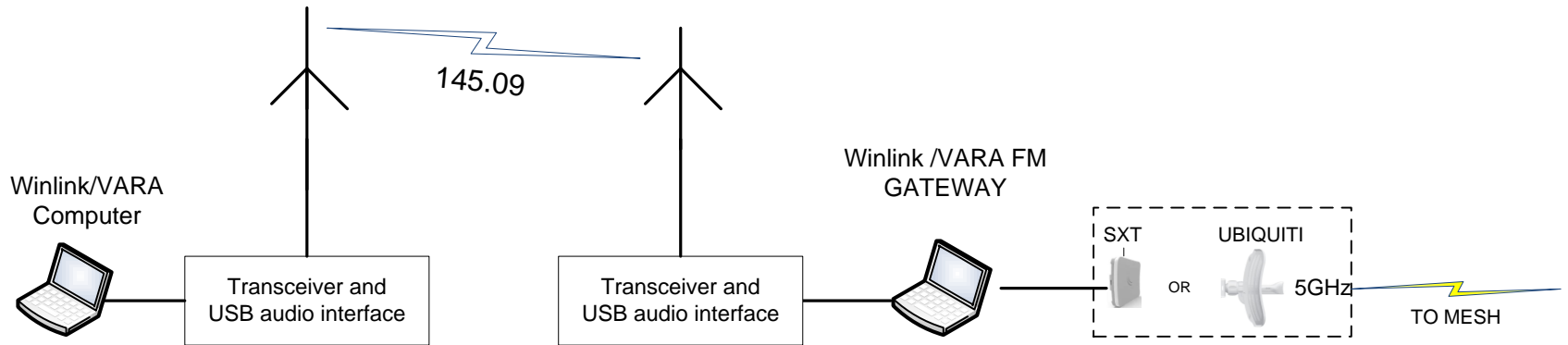
Note: currently there is an anomaly yet to be figured out
 Only when linphone app dials to an IP phone no audio heard on linphone side however if the call is reversed all audio works fine.



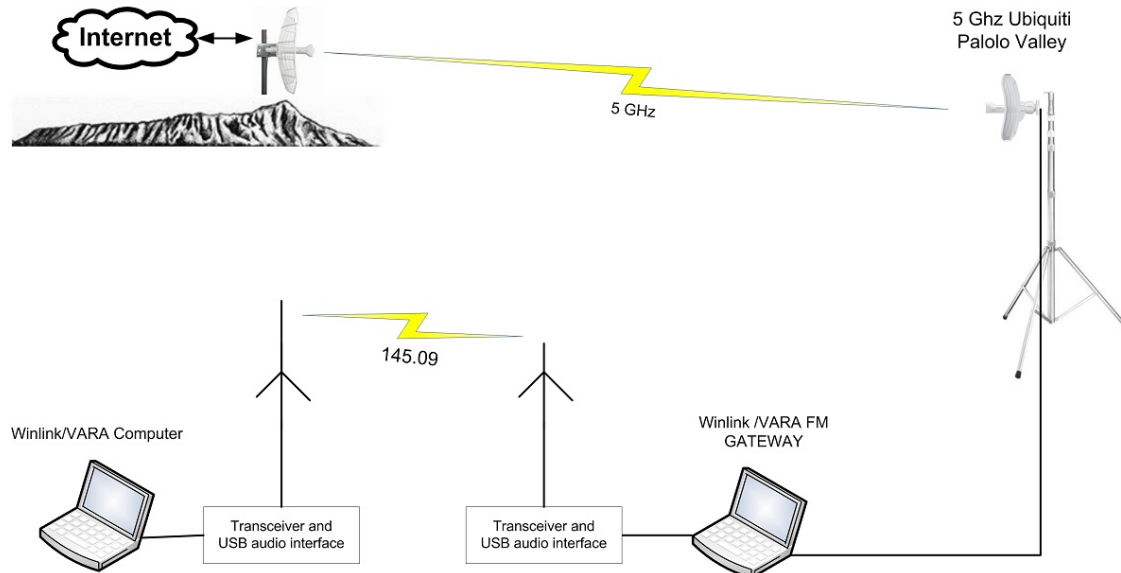
MESH access configurations tested



WINLINK GATEWAY to AREDN MESH



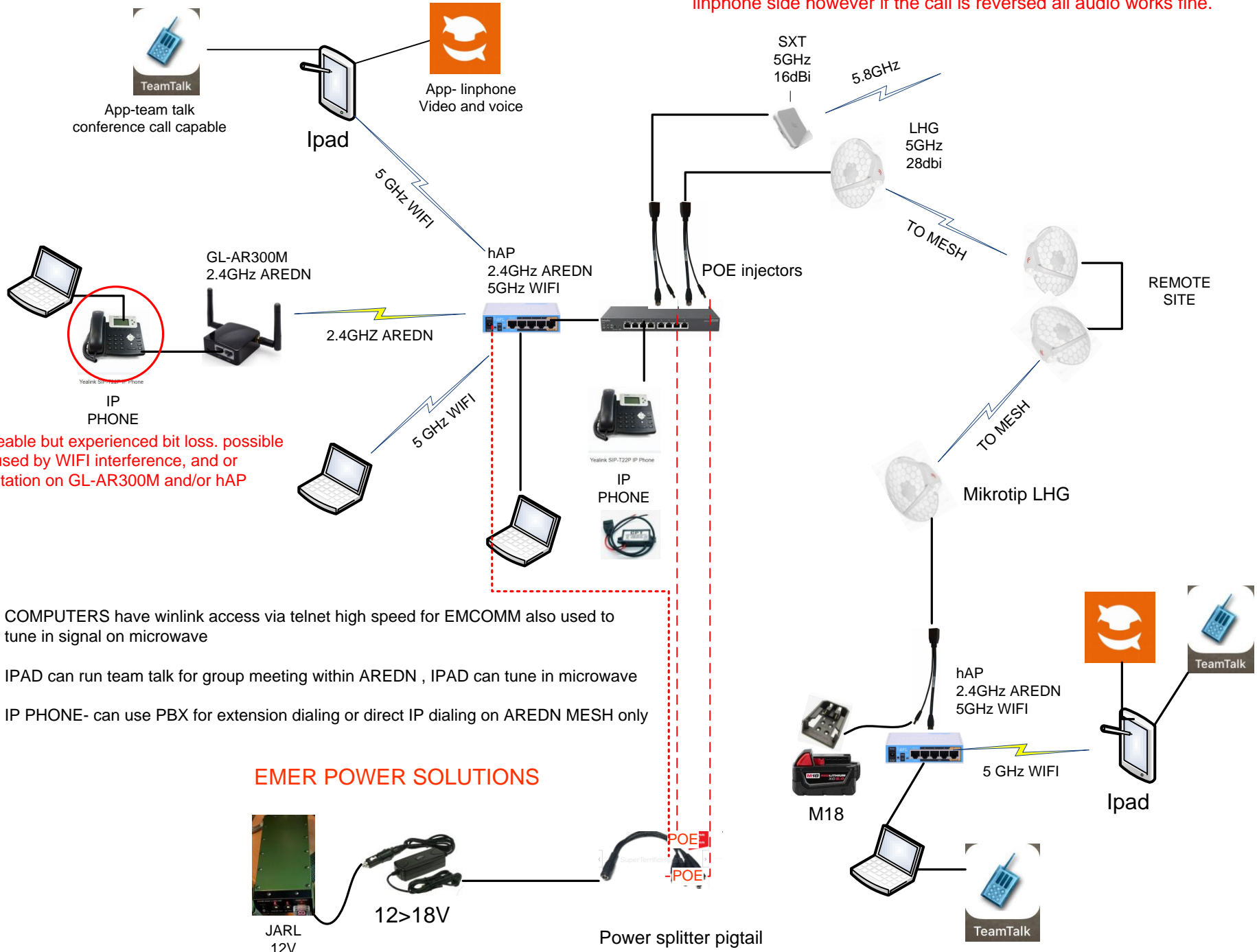
AREDN Mesh 5 GHz to Palolo Valley Gateway



Team Talk Ipad App

CONFIGURATIONS TESTED

Note: currently there is an anomaly yet to be figured out
 Only when linphone app dials to an IP phone no audio heard on linphone side however if the call is reversed all audio works fine.



FIELD KIT rev A

Revision A

- 1. Enabled POE hAP to run Mikrotik LHG (removed POE injector)
- 2. added circuit breaker (removed fuse)
- 3. added USB to DC cable hAP to Yealink (removed USB powerbank)
- 4. reduced to 1 DC cable from M18

